

# eclectic collector

ART, ANTIQUES & STYLISH FINDS » by Alex Riviera

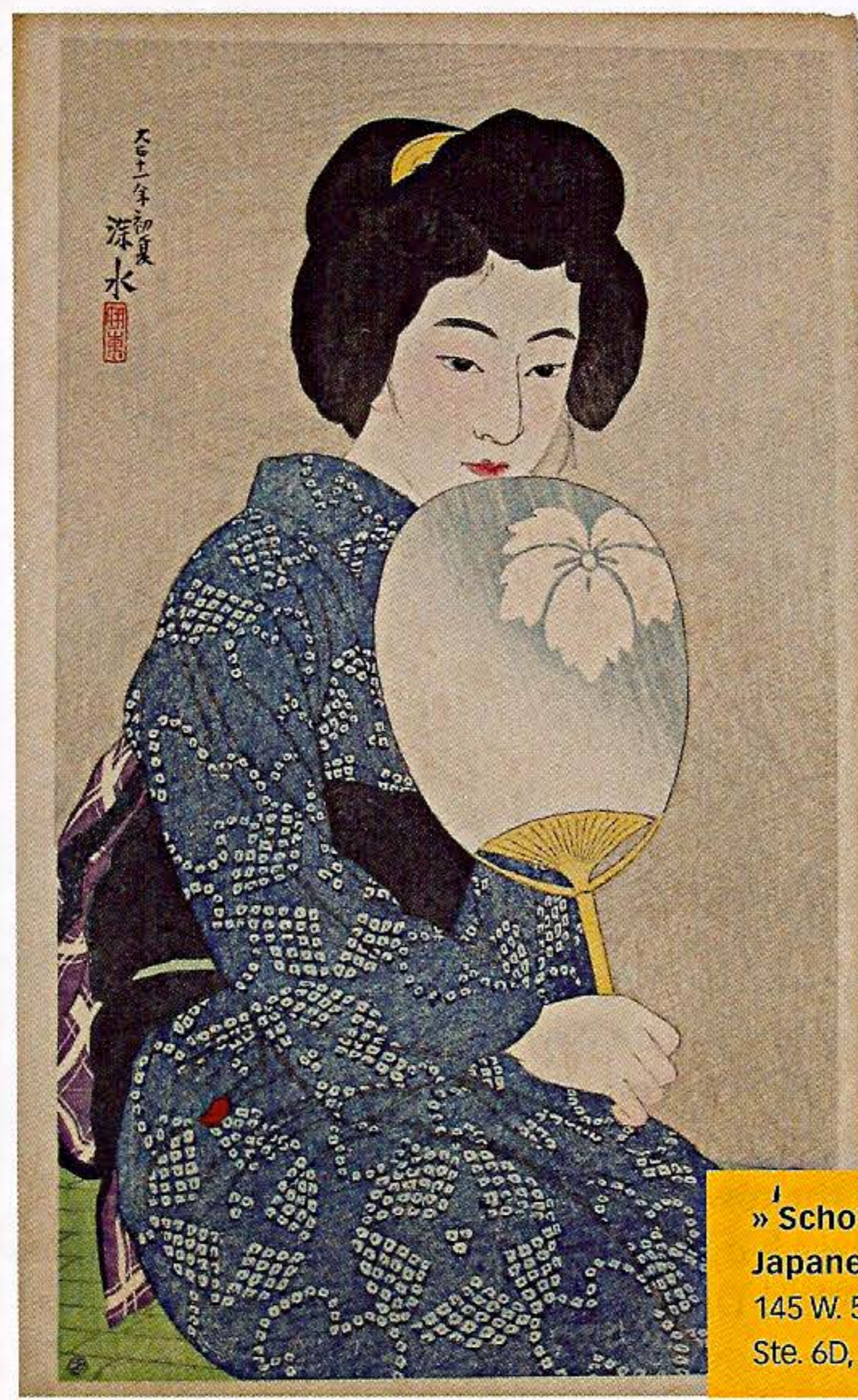


## Modern Age

A style of architecture and design, midcentury modernism emerged around World War II and is most distinguishable by its clean, streamlined aesthetic. Designers found beauty in uncluttered lines and incorporated them in their works to create striking visuals. An example includes architect Roger Feraud's (1890-1964) rocker (*near right*, 1932), which is on view at **Magen H. Gallery** and is comprised of sleek, hand-welded metal and smooth cowhide. Postwar artists were also drawn to cutting-edge, man-made materials, such as Plexiglas, Bakelite and Lucite, and attempted to emphasize the hope of the future through the prodigious use of vibrant color and interesting textures. This latter concept can be seen in a black office chair (*far right*) from 1956. Designed by architect Pierre Jeanneret (1896-1965)—and also presented at Magen H. Gallery—it features a bright red straw cushion, cane backrest and a frame of teakwood, a material that many midcentury modern designers often embraced for its warmth and strength.



» Magen H. Gallery, 54 E. 11th St., 777-8670



## Print Master

A family misfortune turned out to be a blessing for Ito Shinsui (1898-1972). The Tokyo native wasn't initially interested in art, but after his father's business went bankrupt, the then-13-year-old found work as an apprentice at the Tokyo Printing Company, where he discovered his passion for painting. He eventually turned his focus toward designing wood-block prints and helped spearhead *shin hanga*, a new type of wood-block printmaking that modernized traditional Japanese techniques. Shinsui was also hailed for his images of *bijin-ga* (beautiful women), such as "Twelve Figures of Modern Beauties: Cotton Kimono" (*left*, 1922, 17.125 in. by 10 in.), which is on view at **Scholten Japanese Art**, and in 1970, received the Order of the Rising Sun, Japan's second most prestigious national distinction.

» Scholten Japanese Art, 145 W. 58th St., Ste. 6D, 585-0474

## show openings

- **STEPHEN COLLETT**  
Jul. 2-30 at **Jadite Galleries**, 413 W. 50th St., 315-2740
- **RUDY SHEPHERD**  
Jul. 8-31 at **Location One**, 26 Greene St., 334-3347
- **CZECH GLASS SCULPTURE**  
Jul. 9-Aug. 1 at **Heller Gallery**, 420 W. 14th St., 414-4014

PHOTO: CHAIRS, MATT VACCA